



# PERSEO PROFILE TC

PHOTOMETRY



**AYRTON**  
Digital Lighting





<b>Total Flux</b>	26847 lm (@zoom 128, integrating sphere measurement, Fan mode auto)
-------------------	---

<b>CCT @LED engin</b>	7000 (±500K)
<b>CCT @open</b>	6500 (±500K)
<b>Ra @open</b>	90 (±2)
<b>TLCI</b>	88
<b>TM-30</b>	Rf: 87.2 Rg: 95.6

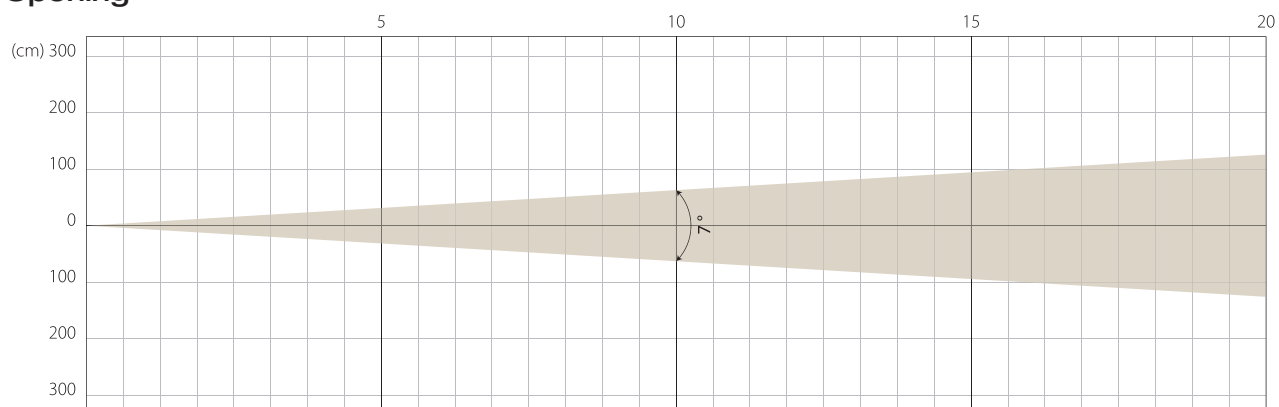
<b>Fan Mode</b>	<b>Noise Level (dBA)</b>	<b>by Goniometer (lm)</b>	<b>by Sphere (lm)</b>
<b>Auto</b>	44,9	22315	26286
<b>Stage</b>	47,1	22860	26847
<b>Silence</b>	39,9	17687	21020
<b>Super Silence</b>	34,9	13844	16186

Note: noise measured @1m distance, static status, ambient 31 dBA.

<b>Voltage / Power</b>	100-240V, 50-60Hz	800 W
<b>Fixture Dimension / Weight</b>	490 x 710 x 330 mm	38.8 kg
<b>Packing Dimension / Weight</b>	660 x 675 x 560 mm	58 kg

MIN ZOOM

### Beam Opening

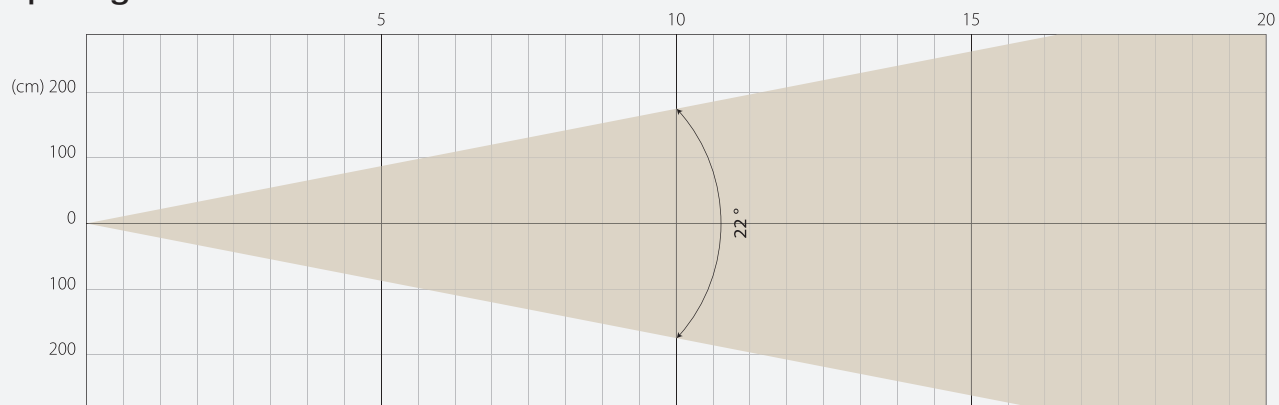


### Intensity

Distance (m)	5		10		15		20	
unit	lux	diameter	lux	diameter	lux	diameter	lux	diameter
White	47066	0,61	11767	1,22	5230	1,83	2942	2,45

MIDDLE ZOOM

### Beam Opening

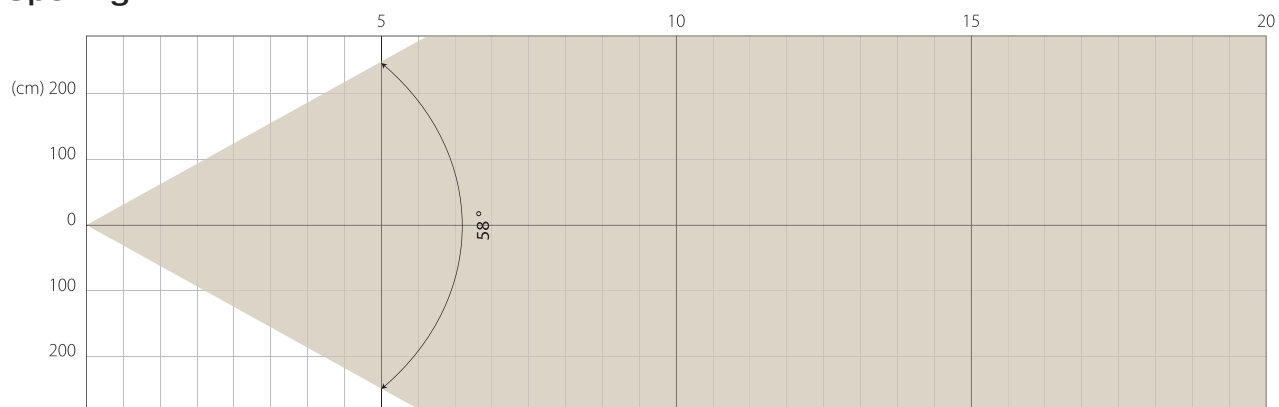


### Intensity

Distance (m)	5		10		15		20	
unit	lux	diameter	lux	diameter	lux	diameter	lux	diameter
White	7404	1,94	1851	3,89	823	5,83	463	7,78

MAX ZOOM

### Beam Opening



### Intensity

Distance (m)	5		10		15		20	
unit	lux	diameter	lux	diameter	lux	diameter	lux	diameter
White	1253	5,54	313	11,09	139	16,63	78	22,17

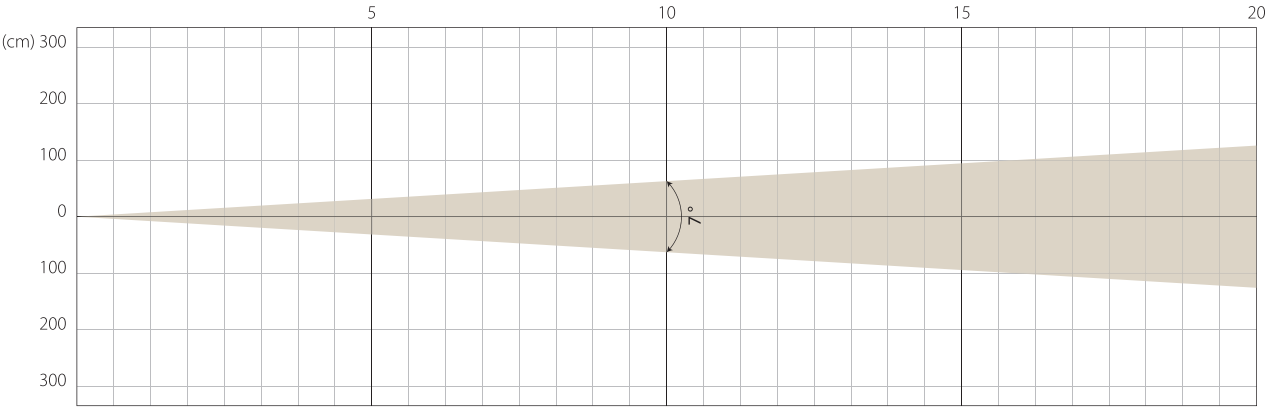
Note: Measurement done with Goniometer

STAGE MODE

NATIVE CRI GREATER THAN 70

MIN ZOOM

Beam Opening

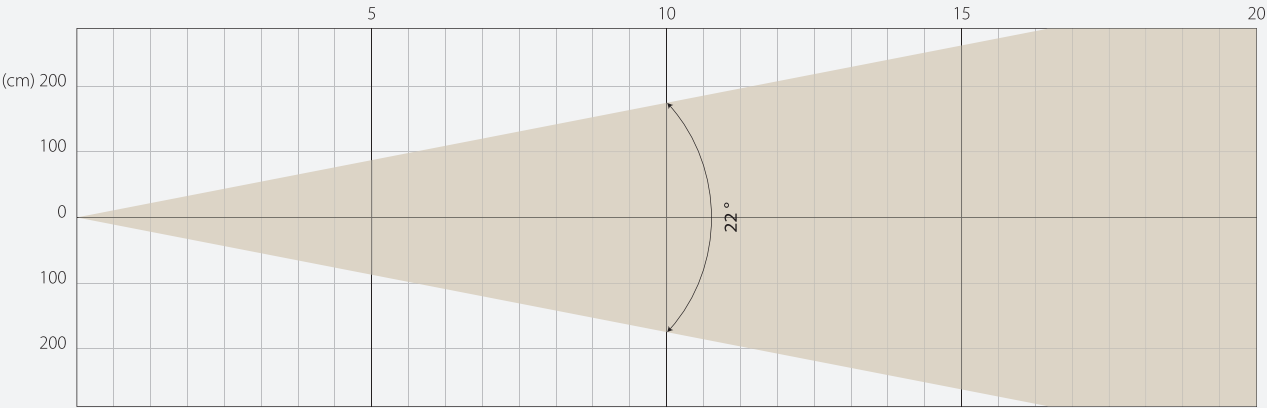


Intensity

Distance (m)	5		10		15		20	
unit	lux	diameter	lux	diameter	lux	diameter	lux	diameter
White	48332	0,61	12083	1,22	5370	1,83	3021	2,45

MIDDLE ZOOM

Beam Opening

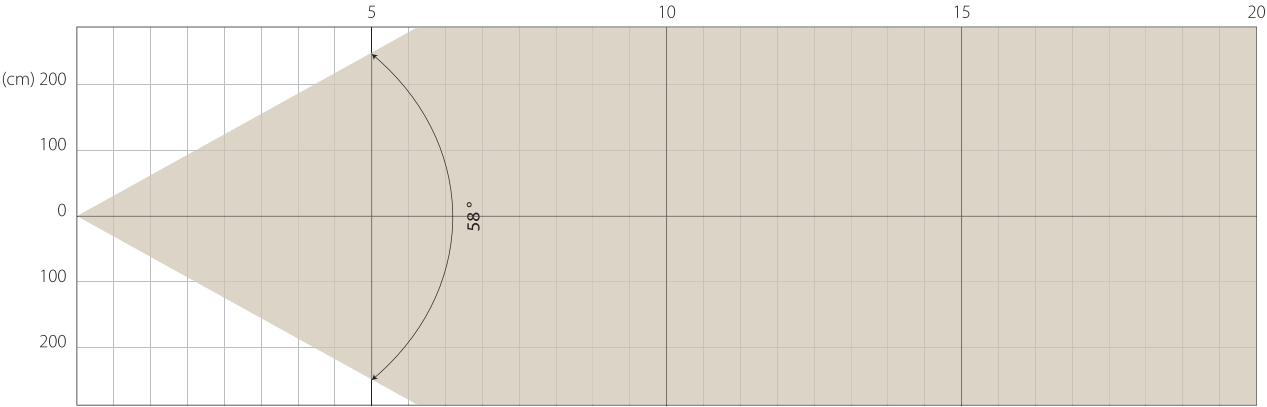


Intensity

Distance (m)	5		10		15		20	
unit	lux	diameter	lux	diameter	lux	diameter	lux	diameter
White	7712	1,94	1928	3,89	857	5,83	482	7,78

MAX ZOOM

Beam Opening



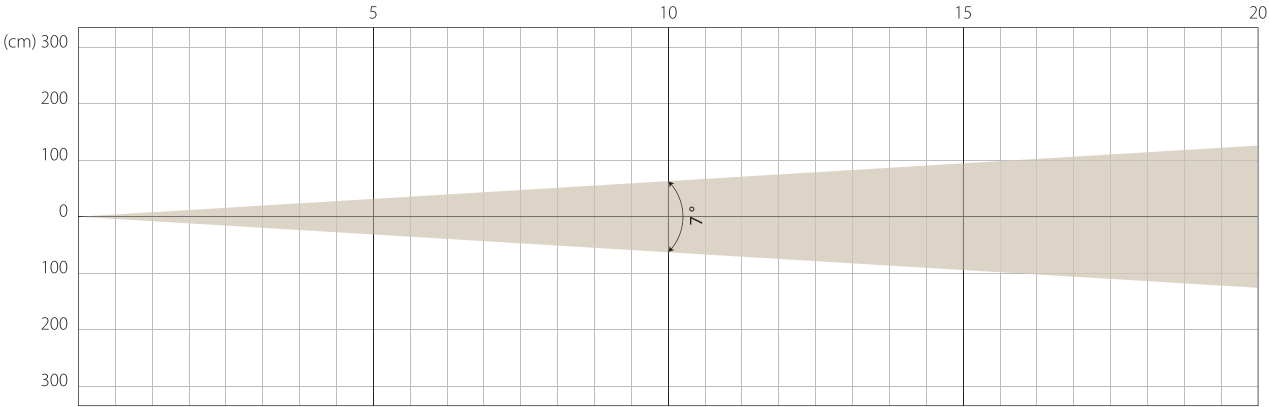
Intensity

Distance (m)	5		10		15		20	
unit	lux	diameter	lux	diameter	lux	diameter	lux	diameter
White	1304	5,54	326	11,09	145	16,63	82	22,17

Note: Measurement done with Goniometer

MIN ZOOM

Beam Opening

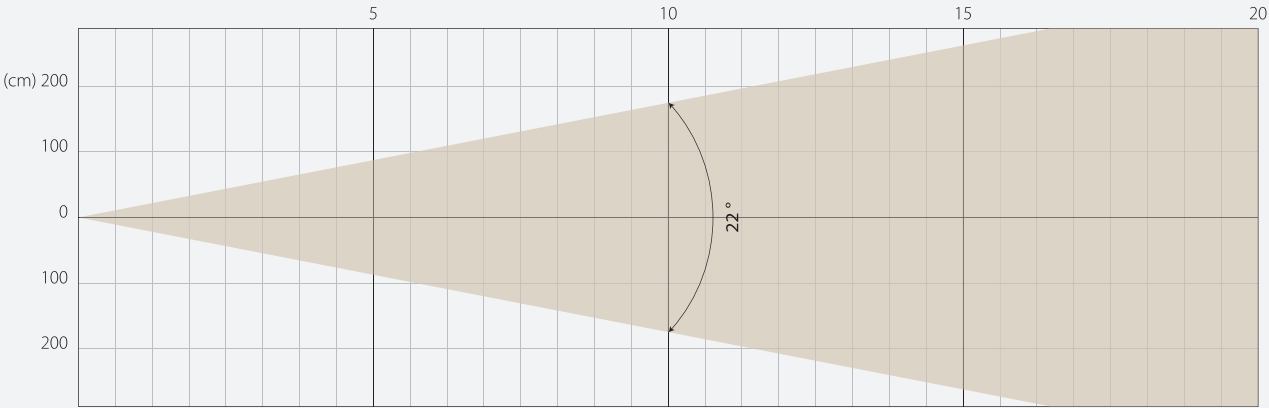


Intensity

Distance (m)	5		10		15		20	
unit	lux	diameter	lux	diameter	lux	diameter	lux	diameter
White	38142	0,61	9536	1,22	4238	1,83	2384	2,45

MIDDLE ZOOM

Beam Opening

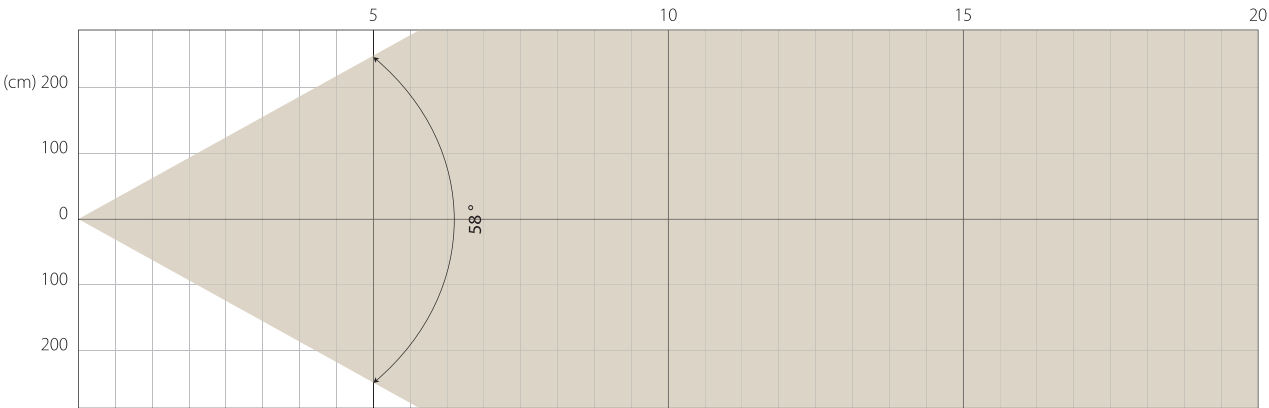


Intensity

Distance (m)	5		10		15		20	
unit	lux	diameter	lux	diameter	lux	diameter	lux	diameter
White	6084	1,94	1521	3,89	676	5,83	380	7,78

MAX ZOOM

Beam Opening



Intensity

Distance (m)	5		10		15		20	
unit	lux	diameter	lux	diameter	lux	diameter	lux	diameter
White	1014	5,54	254	11,09	113	16,63	63	22,17

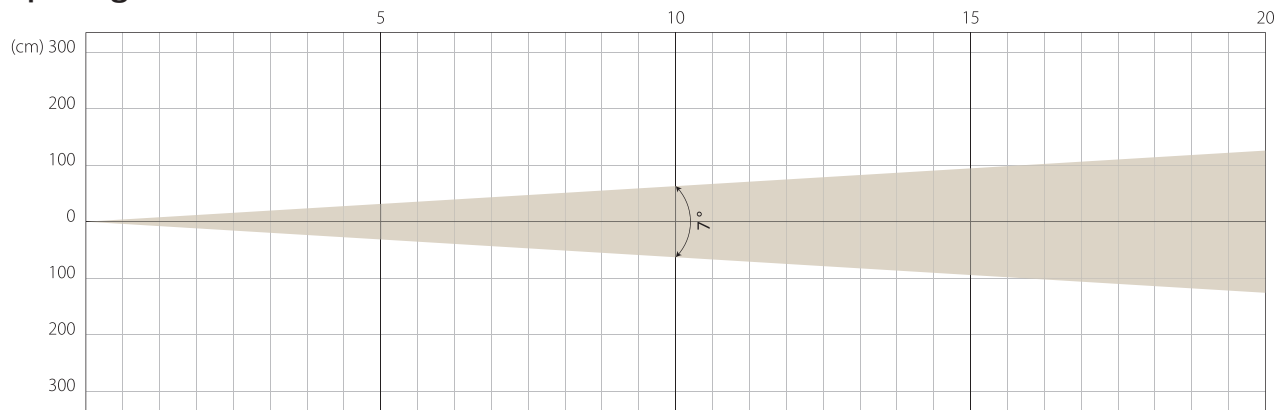
Note: Measurement done with Goniometer

# SUPER SILENCE MODE

NATIVE CRI GREATER THAN 70

MIN ZOOM

## Beam Opening

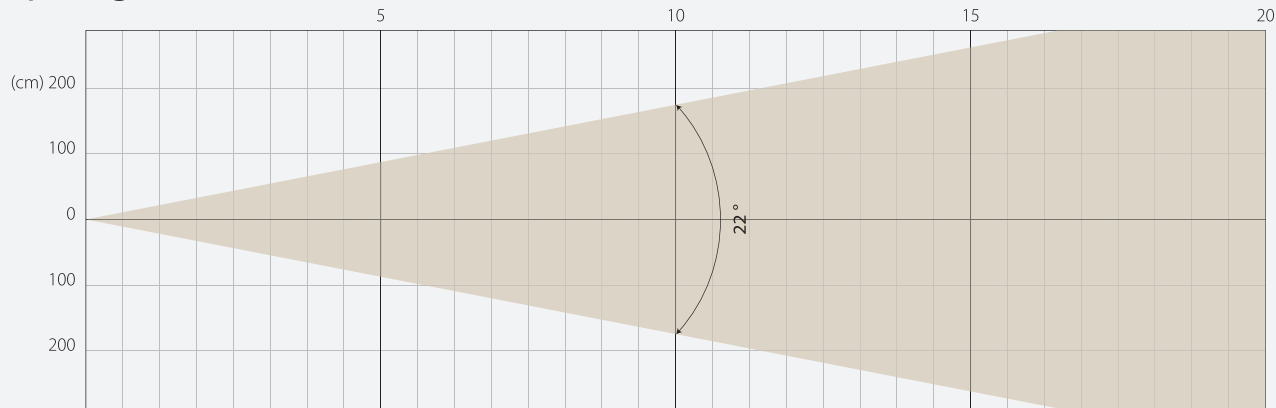


## Intensity

Distance (m)	5		10		15		20	
unit	lux	diameter	lux	diameter	lux	diameter	lux	diameter
White	29302	0,61	7325	1,22	3256	1,83	1831	2,45

MIDDLE ZOOM

## Beam Opening

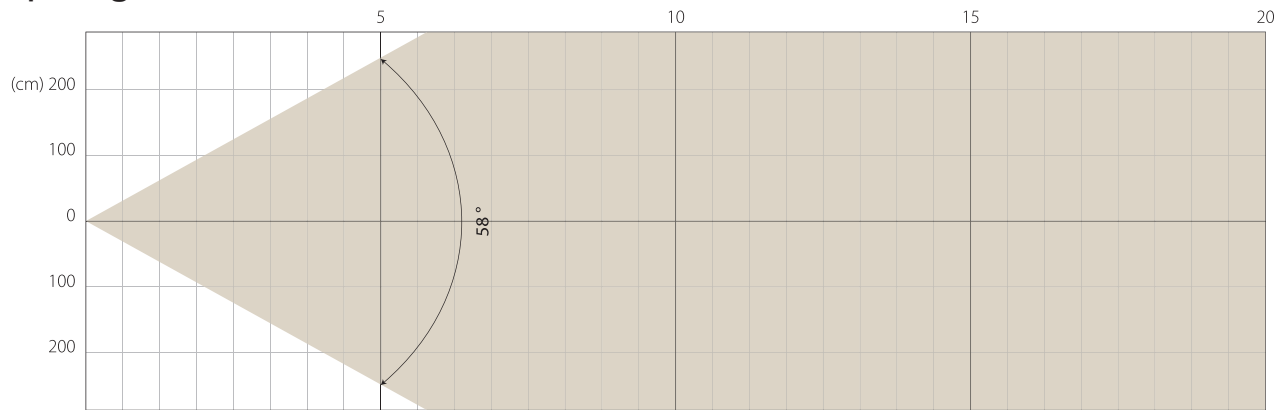


## Intensity

Distance (m)	5		10		15		20	
unit	lux	diameter	lux	diameter	lux	diameter	lux	diameter
White	4746	1,94	1187	3,89	527	5,83	297	7,78

MAX ZOOM

## Beam Opening

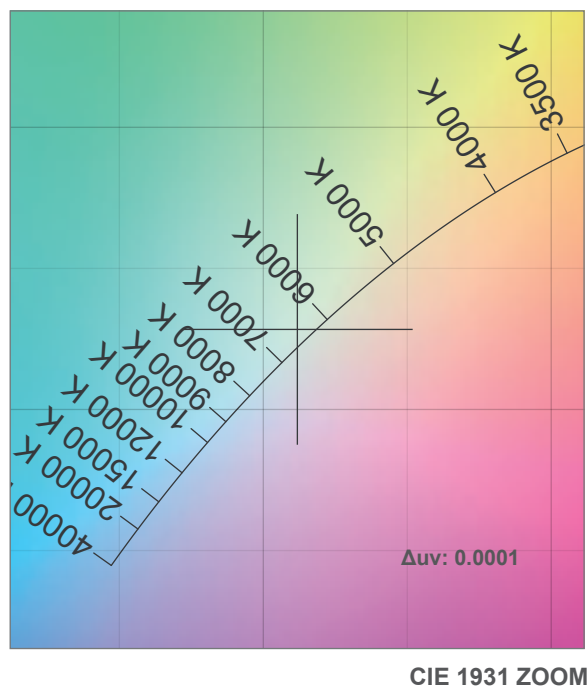
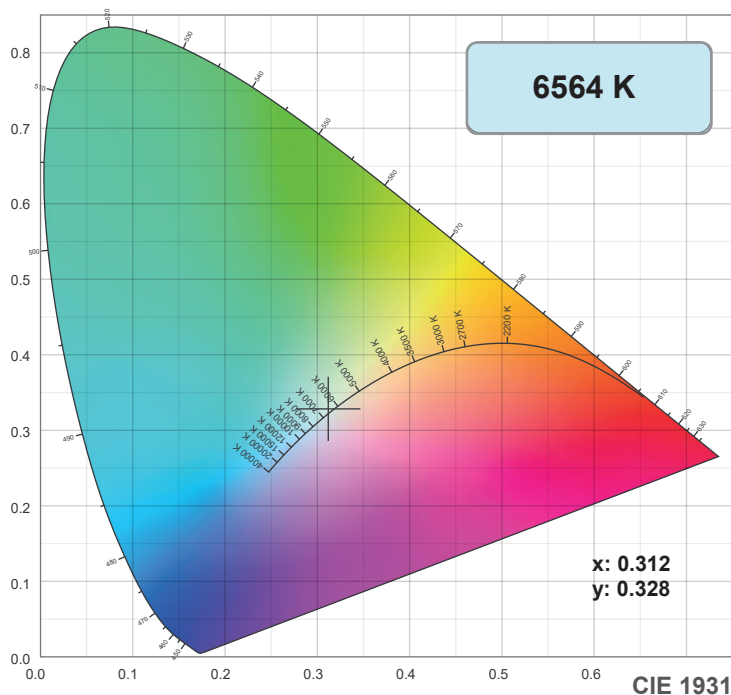


## Intensity

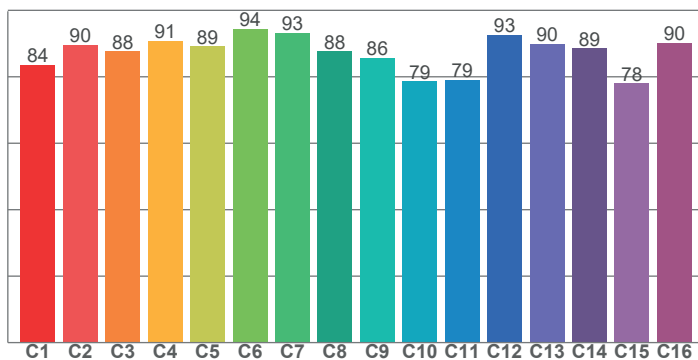
Distance (m)	5		10		15		20	
unit	lux	diameter	lux	diameter	lux	diameter	lux	diameter
White	785	5,54	196	11,09	87	16,63	49	22,17

Note: Measurement done with Goniometer

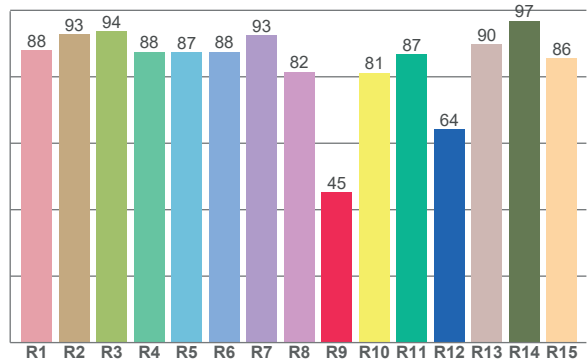
# COLOR DETAILS



TM-30: 87.2



CRI: 88.9 (R1-R8)



CRI R values, only R1-R8 are used to calculate final CRI value

R1	R2	R3	R4	R5	R6	R7	R8	R9	R10	R11	R12	R13	R14	R15
88.0	92.8	93.8	87.5	87.3	87.5	92.5	81.5	45.3	81.2	86.7	64.2	89.9	96.8	85.5

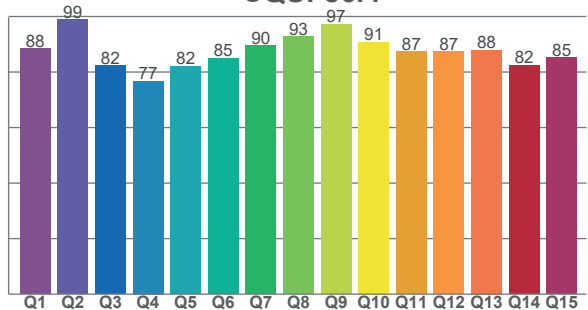
TM30 C values, 16 binned values out of total of 99 C values

C1	C2	C3	C4	C5	C6	C7	C8	C9	C10	C11	C12	C13	C14	C15	C16
83.6	89.6	87.6	90.7	89.2	94.3	93.2	87.6	85.6	78.6	79.1	92.6	90.0	88.6	78.1	90.1

CQS Q values

Q1	Q2	Q3	Q4	Q5	Q6	Q7	Q8	Q9	Q10	Q11	Q12	Q13	Q14	Q15
88.5	99.0	82.3	76.7	82.1	84.9	89.5	92.8	97.2	90.8	87.4	87.4	88.0	82.4	85.2

CQS: 86.4



## Color parameters

Color temperature	Color rendering index	Red component	Color fidelity	Color gamut	Color quality scale	Color coordinate cie 1931	Color coordinate cie 1931	Color coordinate	Color coordinate	Color deviation from black body
CCT	CRI	CRI R9	TM30 Rf	TM30 Rg	CQS	x	y	u	v	$\Delta uv$
6564 K	88.9	45.3	87.2	95.6	86.4	0.312	0.328	0.197	0.312	0.0001



# TM-30 DETAILS

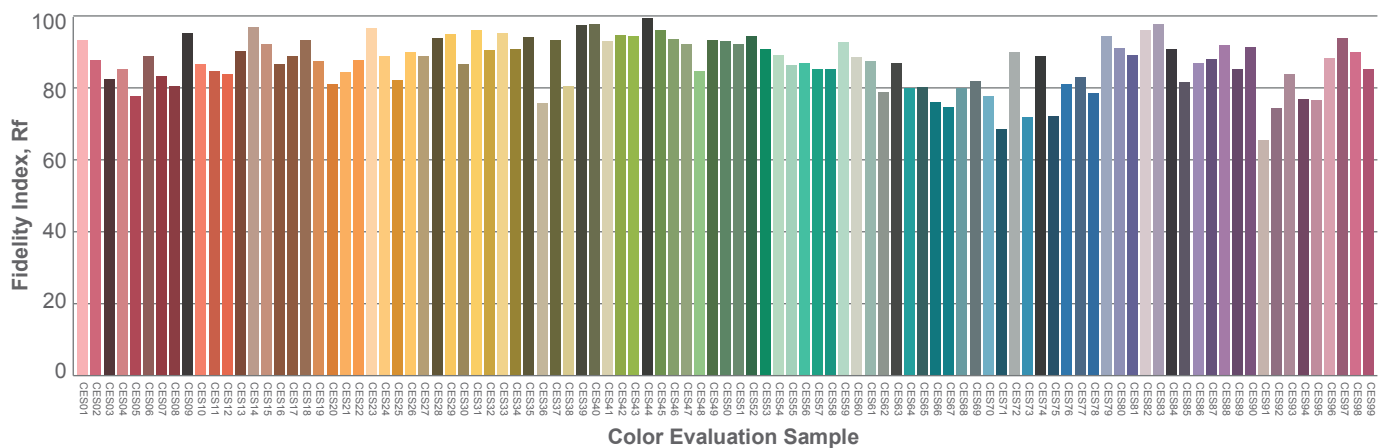
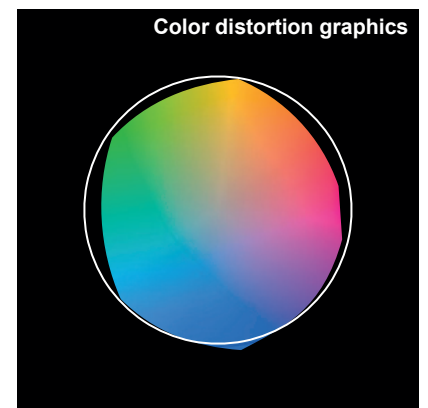
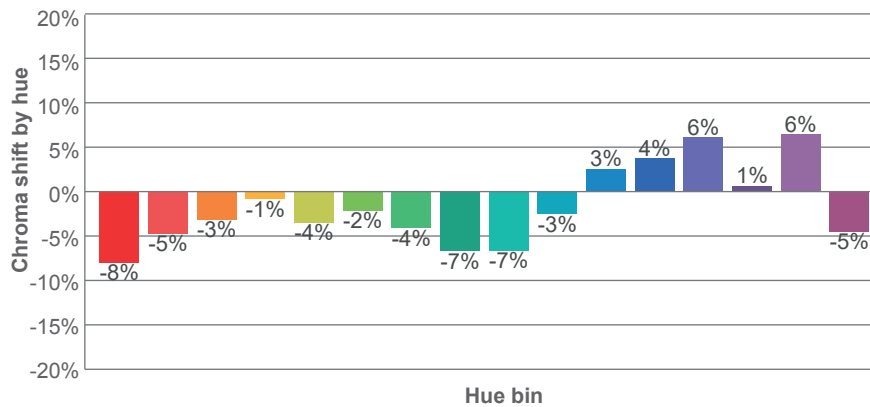
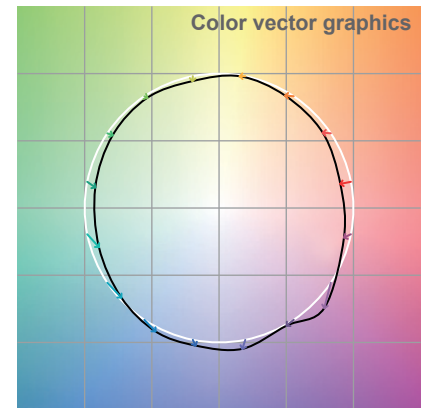
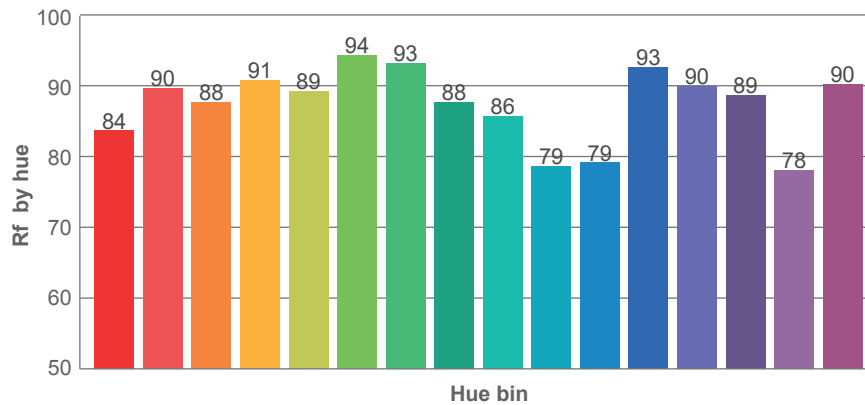
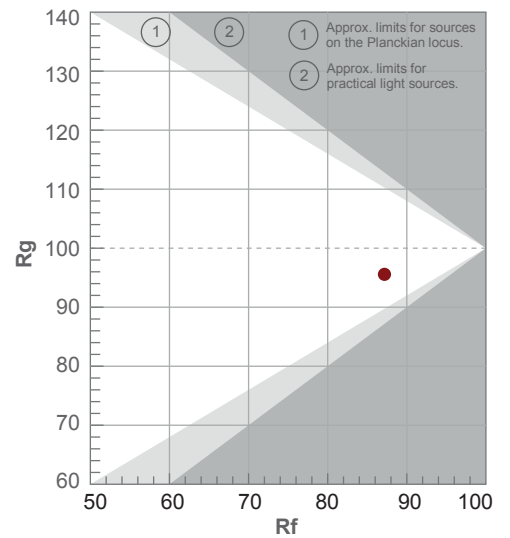
**Rf 87.2**

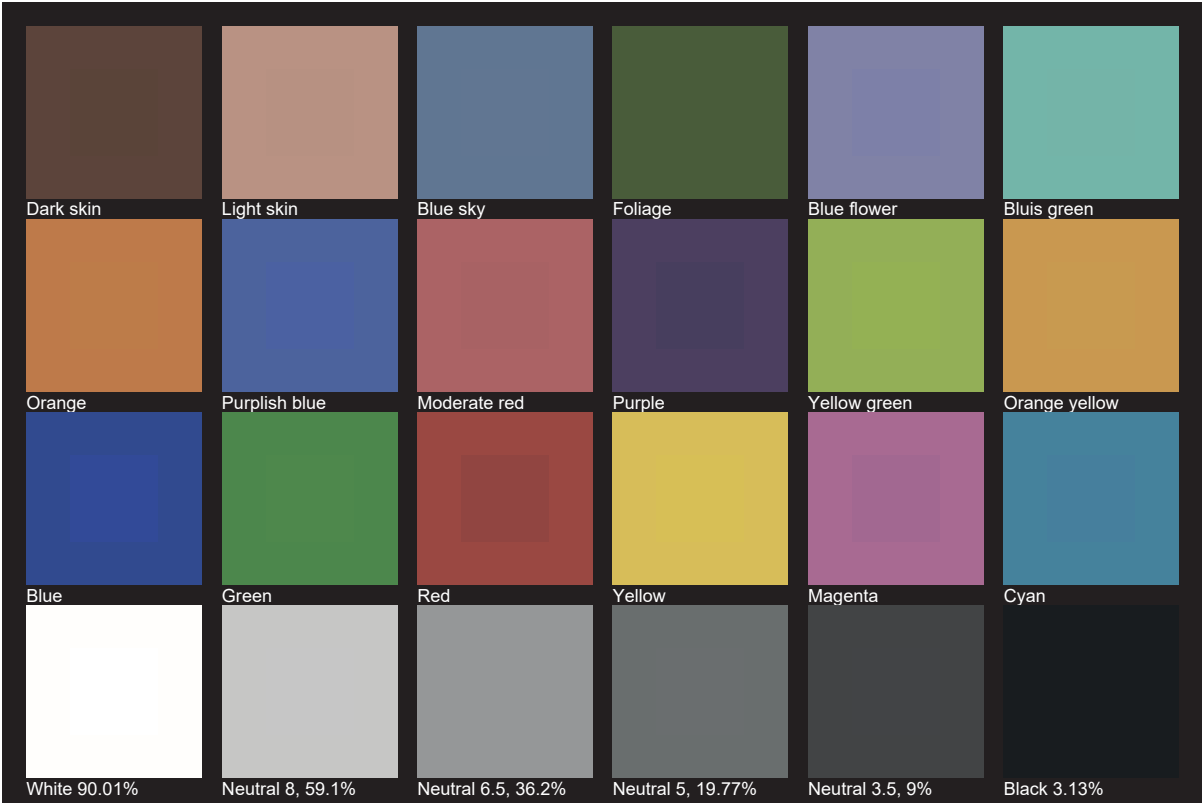
Fidelity index Rf

**Rg 95.6**

Gamut index Rg

Hue Bin	R <sub>f</sub>	Shifts (%)	
		Chroma	Hue
1	84	-8%	0%
2	90	-5%	4%
3	88	-3%	6%
4	91	-1%	4%
5	89	-4%	1%
6	94	-2%	-1%
7	93	-4%	-1%
8	88	-7%	3%
9	86	-7%	11%
10	79	-3%	15%
11	79	3%	12%
12	93	4%	3%
13	90	6%	-3%
14	89	1%	-7%
15	78	6%	-18%
16	90	-5%	-3%









**AYRTON**  
Digital Lighting